

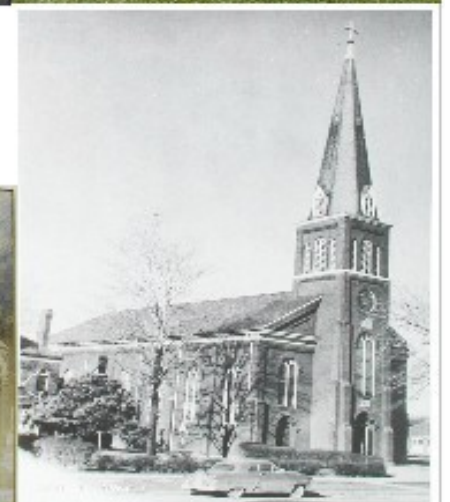
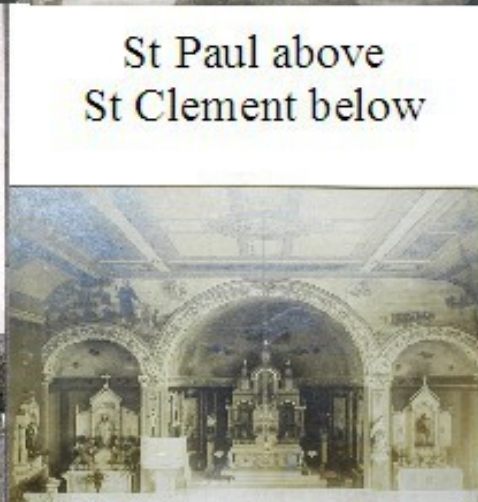
Our Older Churches

There was a **Methodist church group in Warren before 1850** probably helped along by Abel Warren. The First Methodist Church of Warren was started about 1853 and a **log chapel built**.

This building was replaced in 1857. It is now the oldest structure within the Warren Village area. This church first stood to the east of the Warren Union Cemetery on the side of the Creek Road (Chicago Road). It was moved to its present location at Seventh and Fillmore in 1884.

About 1850 a group representing the Warren Township outpost of St Peters Evangelical Church of halfway met in the old Methodist Church across mound Road. In **1864 they organized St Paul Evangelical Church**. The current impressive

building was built in 1894. It had a steeple that towered 35 feet above the belfry but lightning destroyed the steeple in 1921. Records were kept in German just like the sister church St Clement church that had records in German and Latin. Services were in German until 1935. St Anne began in August 1943. In **1854 the first of four St, Clement churches** was built on Van Dyke. The **Community Church in Center Line was built in 1924**. Now Celtic Cross. The **Bethel Methodist Church on Packard in Center Line was built in the 1920's**. See macombhistory.us for much more on our churches. In 1850 the **population of Warren Township** was 700-750. There was even quicker growth as population figures show. 997 in 1854, 1335 in 1860, 1468 in 1864, 1938 in 1870, 2214 in 1874, 2401 in 1880, 2384 in 1884, 2423 in 1890, 2592 in 1894. 1904 population of Warren Township was 2498.



St Paul above
St Clement below